



PEDAGOGICAL WORKSHOP

***Gynecological Malignant
Neoplasms in Elderly Women***

Biazi Ricieri Assis

Carlos Alberto Sanches Pereira



Welcome

**Let's talk about Gynecological
Malignant Neoplasms in elderly
women?**





What will we cover?

- **Main types**
- **Their signs**
 - **Symptoms**
 - **Preventive measures**



GYNECOLOGICAL MALIGNANT NEOPLASMS IN ELDERLY WOMEN:

An overview

MAIN TYPES

Cervical cancer, endometrial cancer, vulvar, vaginal, and ovarian cancer.

CHARACTERISTICS

General, signs, and symptoms of each type, with an emphasis on the elderly female age group.

CERVICAL CANCER

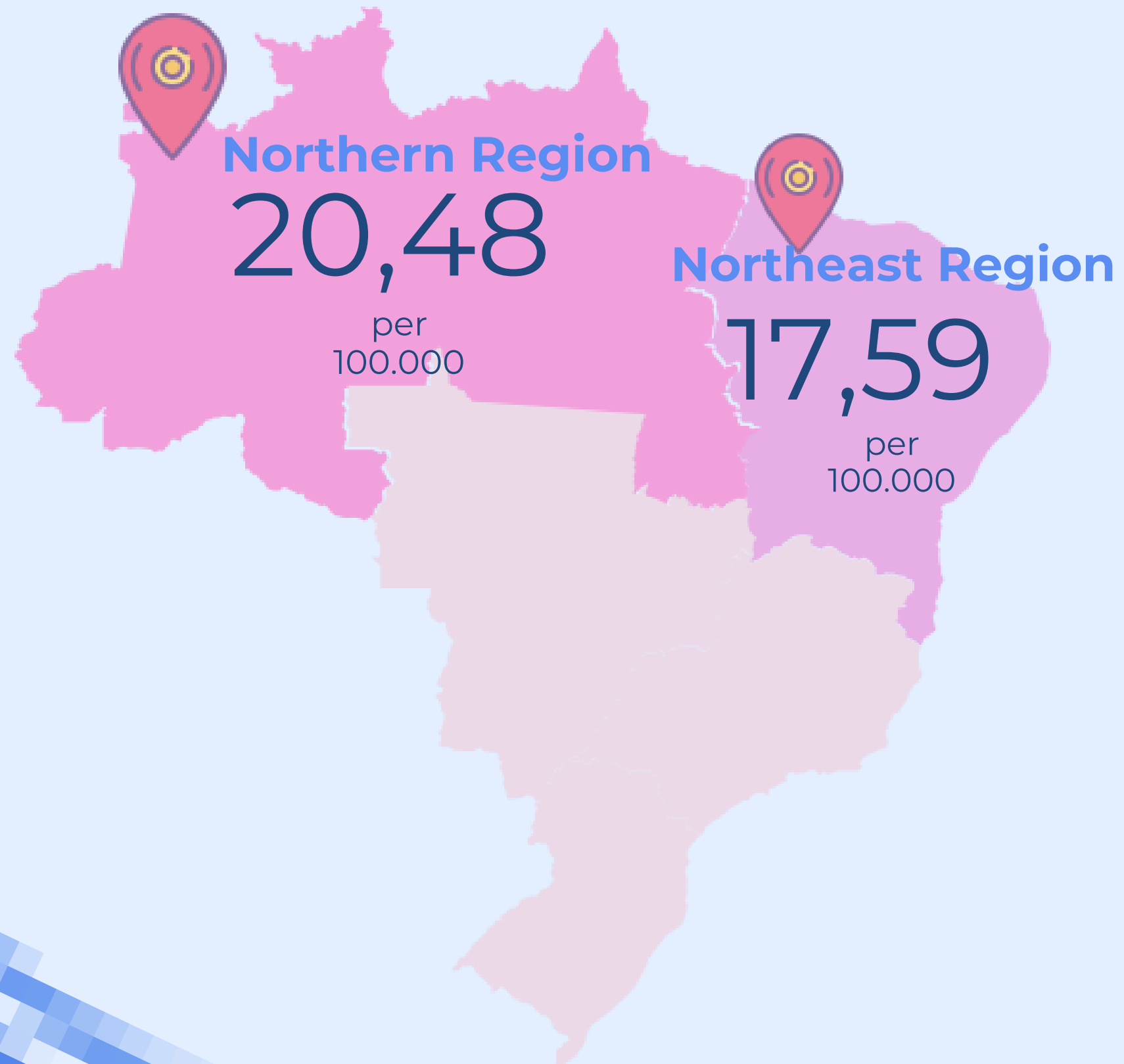
An anatomical illustration of the female reproductive system, including the uterus, fallopian tubes, and ovaries. A network of red lines and dots is overlaid on the uterus, representing a molecular or genetic structure. Two pairs of surgical forceps are positioned around the cervix, with a bright light emanating from the point where they meet. The background is a soft, cloudy sky. The text 'CERVICAL CANCER' is written in large, bold, pink letters at the top left. The text 'CERVICAL CANCER' is also written in smaller, black letters near the surgical instruments. The right side of the image is a solid light blue diagonal shape.

CERVICAL CANCER

CHARACTERISTICS

Generally related to persistent HPV infection.

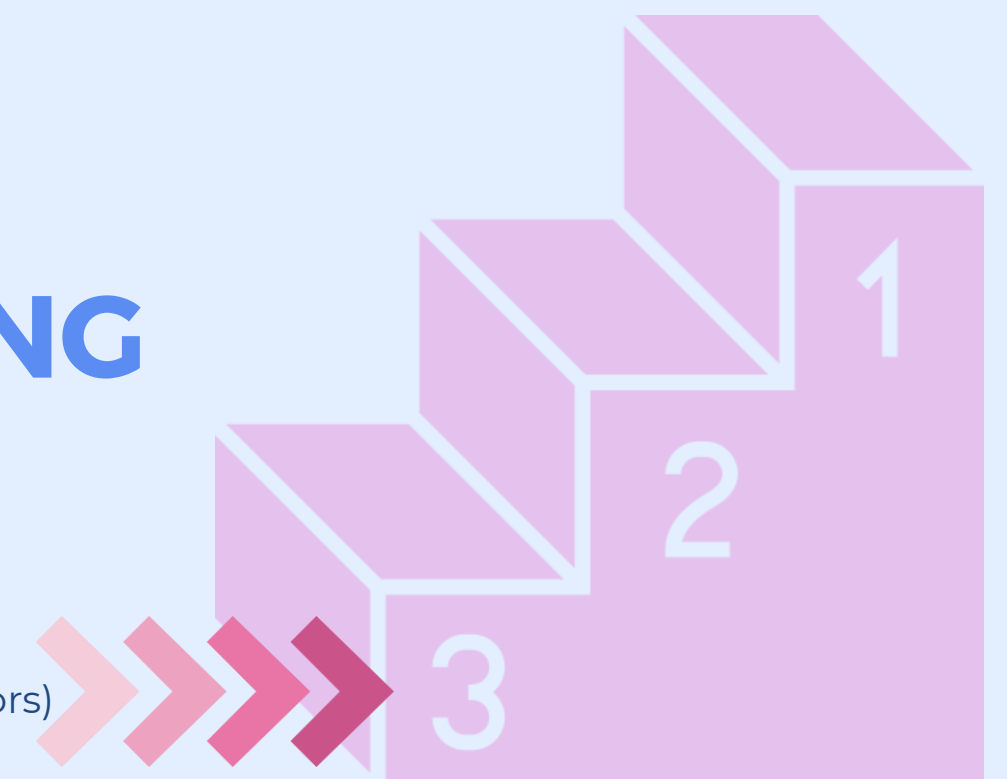
INCIDENCE IN WOMEN



RELEVANT DATA

RANKING

Most incident cancer in women
(excluding non-melanoma skin tumors)



RELEVANT DATA

MORTALITY IN 2020



ESTIMATED NEW CASES - 2023-2025



Source: National Cancer Institute José Alencar Gomes da Silva (Brazil, 2022).

CERVICAL CANCER

SIGNS AND SYMPTOMS

- May not show symptoms in the early stages
- Irregular vaginal bleeding
- Pain during sexual intercourse
- Bleeding after menopause
- Foul-smelling vaginal discharge
- Pelvic pain.



SUBTYPES OF CERVICAL CANCER



Squamous cell carcinoma and Adenocarcinoma

PREVENTION AND EARLY DETECTION

PREVENTION

- HPV vaccination
- Use of condoms during sexual intercourse

EARLY DETECTION

- Regular medical check-ups
- Pap smear test



ENDOMETRIAL CANCER



CHARACTERISTICS

Most are related to estrogenic hyperstimulation of the endometrium.

RELEVANT
DATA

ESTIMATED NEW CASES -
2023-2025

7.840

Endometrial
cancer per
year

7,08

per 100.000 women

INCIDENCE IN WOMEN



5% of cases



Post-menopause

40
year

60 to
70 year



ENDOMETRIAL CANCER

SIGNS AND SYMPTOMS

- Abnormal uterine bleeding (especially after menopause)
- Pelvic pain
- Pain during sexual intercourse
- Watery or bloody vaginal discharge.



SUBTYPES OF ENDOMETRIAL CANCER



Source: Author's personal archive (2023).

PREVENTION AND EARLY DETECTION

PREVENTION

- Maintaining a healthy weight
- Balancing hormone levels (estrogen and progesterone)
- Use of oral contraceptives

EARLY DETECTION

- Awareness of symptoms
- Regular monitoring in women with high-risk factors.
- Regular medical check-ups





VULVAR CANCER

CHARACTERISTICS

May be associated with HPV

RELEVANT DATA

INCIDENCE PER TYPES

90%

of cases

Squamous cell carcinoma (SCC)

ESTIMATED CASES - 2020

6.120

Vulvar cancer

Pathophysiological pathways for the development of SCC:

HPV-dependent type

HPV-independent type

subtype 16 (high risk) is present in most cases, often associated with smoking.

represents the majority of cases, associated with chronic dermatosis

VULVAR CANCER

SIGNS AND SYMPTOMS

- Visible lesion on the vulva that may look like:
 - - a sore
 - - ulcer
 - - patch
- Persistent itching in the genital area
- Pain or burning sensation in the vulva



SUBTYPES OF VULVAR CANCER



The figures illustrate different clinical manifestations of vulvar carcinoma, demonstrating the complexity and diversity of presentations of this neoplasm.

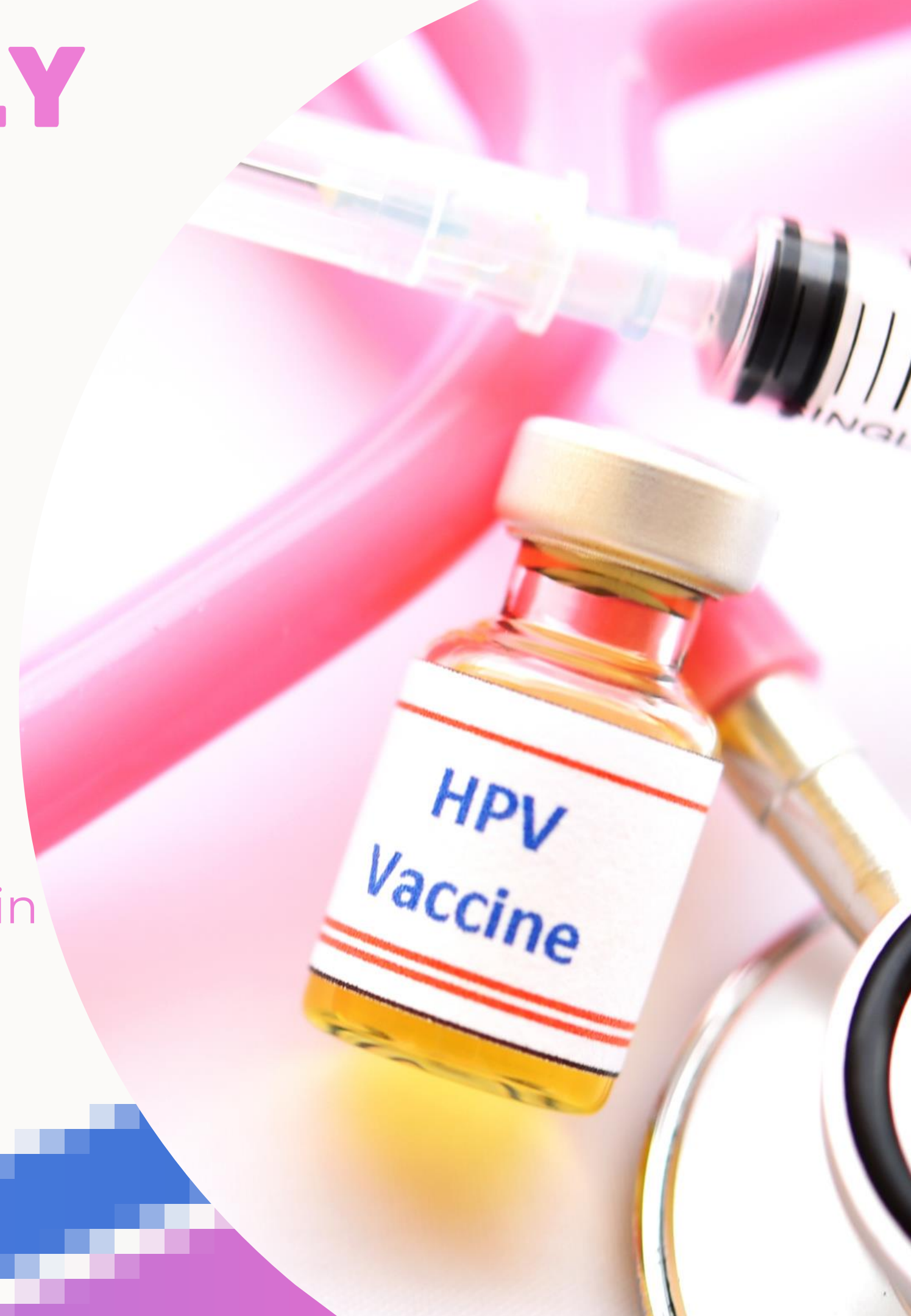
PREVENTION AND EARLY DETECTION

PREVENTION

- HPV vaccination
- Safe sex practices.
- Not smoking can reduce the risk.

EARLY DETECTION

- Regular self-examination to identify any changes in the skin of the vulva



VAGINAL CANCER



CHARACTERISTICS

Rare and often related to HPV infection.

RELEVANT DATA

HISTOLOGY

80%

Squamous Cell
Carcinoma

15%

Adenocarcinoma

5%

Adenosquamous, melanoma, and
sarcoma

INCIDENCE IN WOMEN

1 - 2%

of gynecological
tumors



Persistent HPV
infection

+70

year



CÂNCER DE VAGINA

SIGNS AND SYMPTOMS

- Often does not show symptoms in the early stages.
- Abnormal vaginal bleeding
- Abnormal vaginal discharge
- Pain during sexual intercourse
- Palpable lump or mass in the vagina
- Pelvic pain.



CÂNCER DE VAGINA



Important

Most cases occur as a result of the growth and invasion of cervical tumors

PREVENTION AND EARLY DETECTION

PREVENTION

- HPV vaccination
- Safe sex practices.
- Pap smear test

EARLY DETECTION

- Difficulty in early detection due to lack of specific symptoms in the early stages.



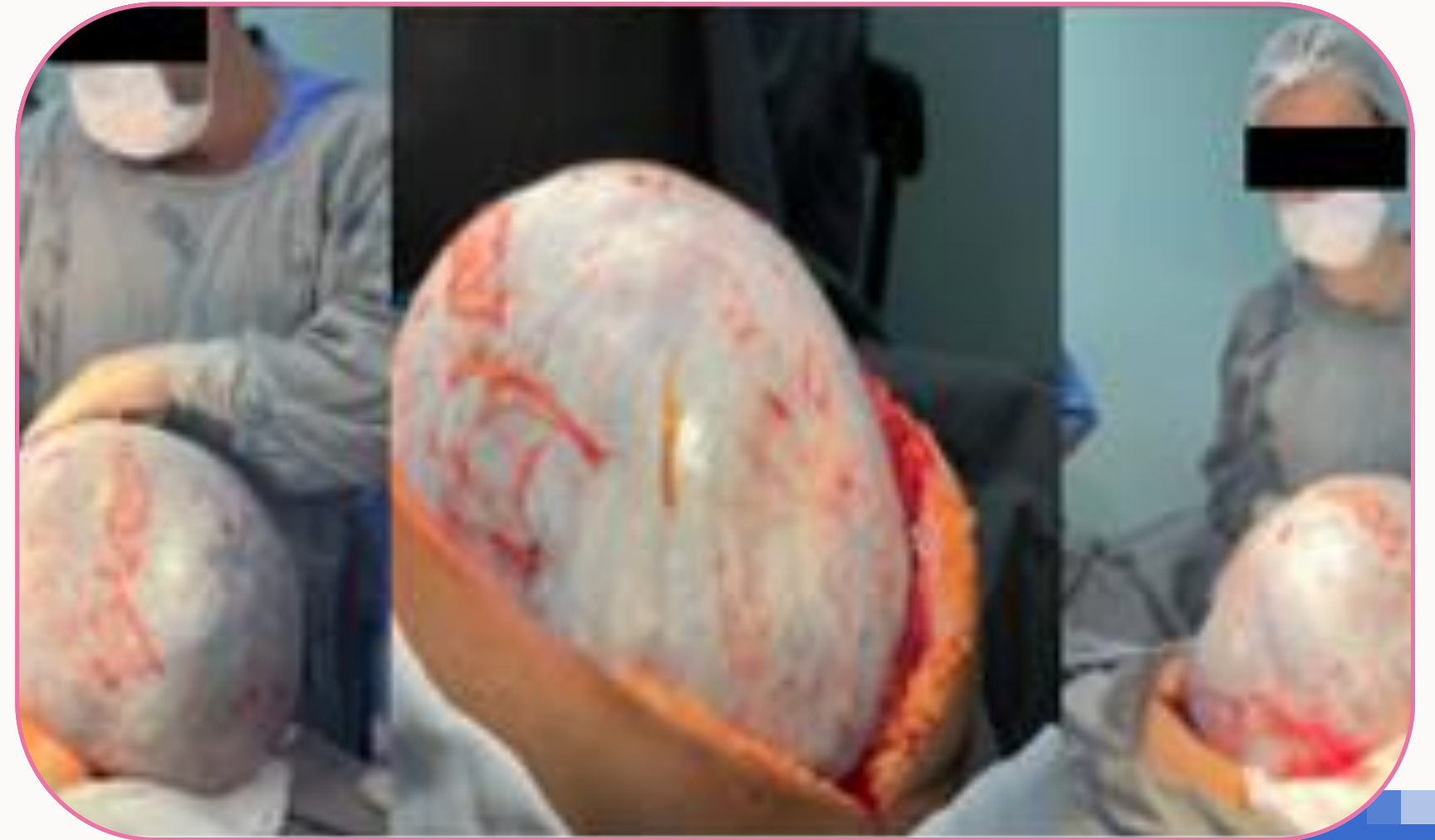
OVARIAN CANCER



CHARACTERISTICS

It presents various histological types, with epithelial carcinomas being the most common.

SUBTYPES OF OVARIAN CANCER



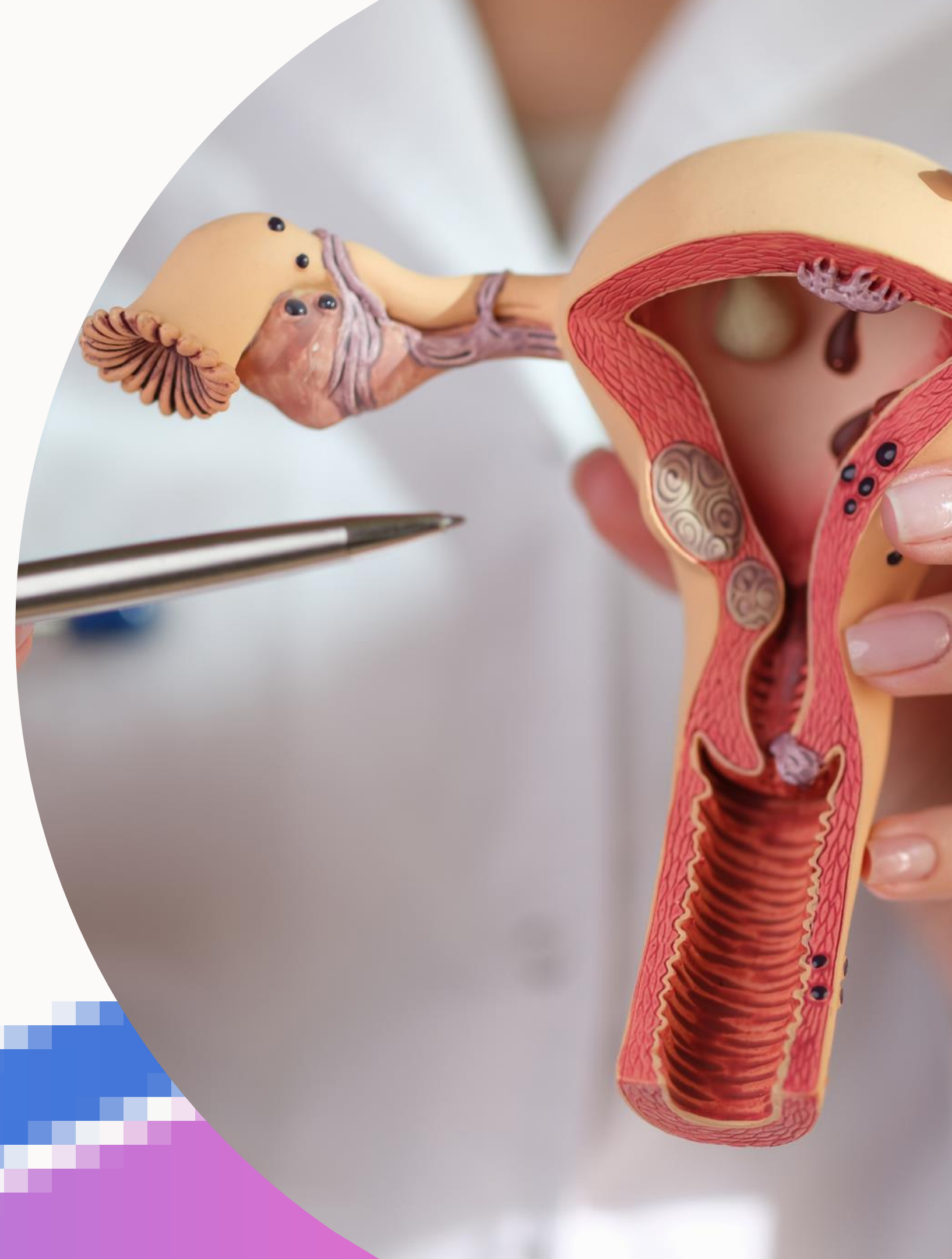
Important

The histological types and disease behavior are heterogeneous and varied, making its treatment a challenge in oncology.

CÂNCER DE OVÁRIO

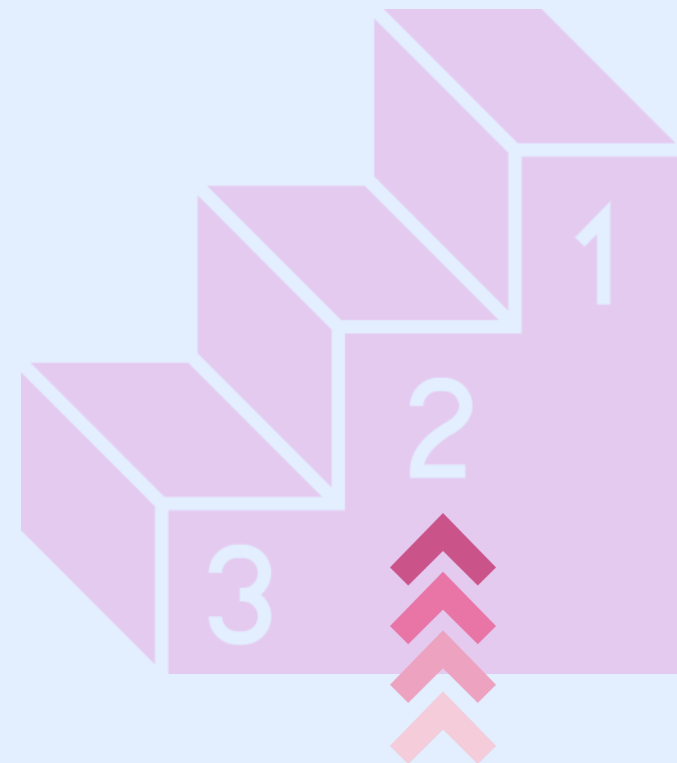
SIGNS AND SYMPTOMS

- May not show symptoms in the early stages
- Increased abdominal volume
- Feeling of fullness quickly after eating
- Intestinal changes (such as constipation),
- Pelvic or lower back pain,
- Nausea and hyporexia
- Unexplained weight loss.



RELEVANT DATA

INCIDENCE IN WOMEN



The most common neoplasm in developed countries

ESTIMATED NEW CASES - 2023-2025



PREVENTION AND EARLY DETECTION

PREVENTION

- Maintaining a healthy weight
- Regular physical activity
- Consuming a balanced diet
- Use of oral contraceptives

EARLY DETECTION

- Regular medical check-ups
- There is still no effective screening protocol.



MAIN SCREENING AND DIAGNOSTIC TESTS

- Oncotic Colpocytology (Pap smear)
- Colposcopy.
- Ultrasound
- CT
- MRI



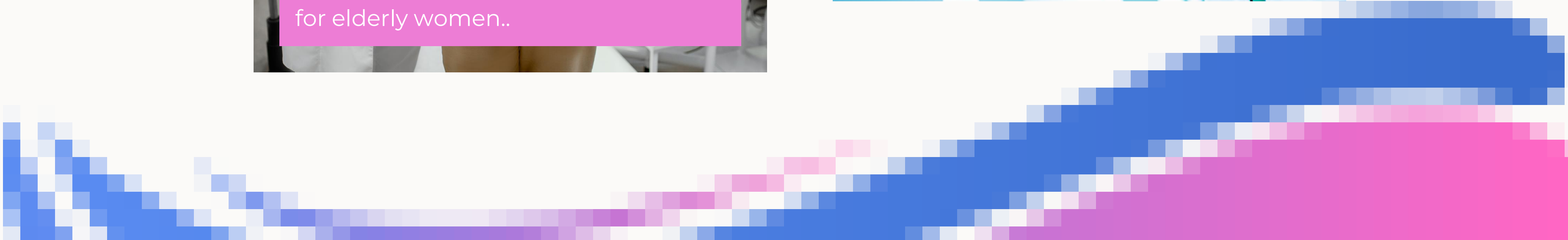
MANAGEMENT OF MAIN GYNECOLOGICAL TUMORS



Individualized therapeutic approach for elderly women..



Constant follow-up and monitoring in this population.



PUBLIC POLICIES AND ACCESSIBILITY FOR ELDERLY WOMEN



Very necessary for:

- Better accessibility and follow-up of elderly women in the public health system.
- The prevention and treatment of gynecological cancers in the elderly population.

PUBLIC POLICIES AND ACCESSIBILITY FOR ELDERLY WOMEN

FACILITIES

- In many countries, the Pap smear test is offered as part of public health services.

DIFFICULTIES

- Insufficient coverage
- Low socioeconomic level
- Lack of information and social stigmas

PUBLIC POLICIES AND ACCESSIBILITY FOR ELDERLY WOMEN

PREVENTION

- Access to HPV vaccination
- Vaccination strategies for elderly women who were not vaccinated when they were younger

HEALTH PROMOTION AND EDUCATION

- Increase awareness of the symptoms of these cancers and the importance of screening.
- Education on healthy lifestyles

PUBLIC POLICIES AND ACCESSIBILITY FOR ELDERLY WOMEN

RESEARCH INCENTIVES

- Continuous investigation is necessary to develop effective screening methods
- Especially for ovarian and endometrial cancer, due to the difficulty of screening.

SUPPORT NETWORKS

- Collaboration of the State
- Health professionals
- Researchers
- Communities.

BARRIERS AND SOLUTIONS FOR ACCESS AND FOLLOW-UP OF ELDERLY WOMEN

DISCUSSION MOMENT ABOUT:

- Common barriers faced by elderly women in seeking health care.
- Potential solutions to increase accessibility and follow-up in this population.

IMPACT OF EDUCATION AND AWARENESS

DISCUSSION MOMENT ABOUT:

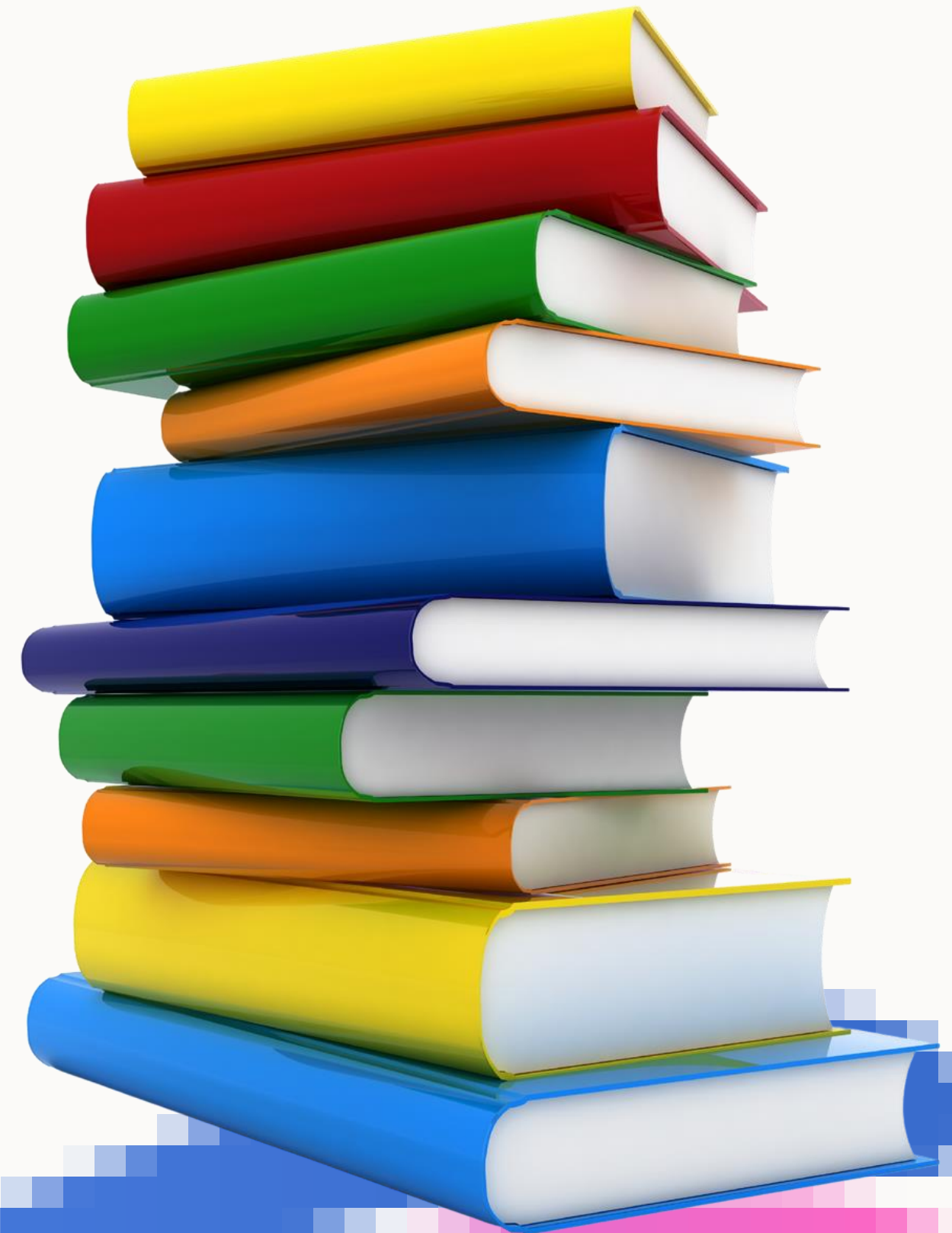
- The role of education and awareness in the prevention and early detection of gynecological neoplasms in elderly women.



INVOLVING THE COMMUNITY AND FAMILY

DISCUSSION MOMENT ABOUT:

- Strategies to improve education and awareness about this population in the training of new health professionals.



INVOLVING THE COMMUNITY AND FAMILY

DISCUSSION MOMENT ABOUT:

- Strategies to improve education and awareness in this population.





FINAL CONSIDERATIONS





THANKS



BIBLIOGRAPHIC REFERENCES

BRASIL. Instituto Nacional de Câncer José Alencar Gomes da Silva. Coordenação de Prevenção e Vigilância. Divisão de Detecção Precoce e Apoio à Organização de Rede. [Diretrizes brasileiras para o rastreamento do câncer do colo do útero](#). – 2. ed. rev. atual. – Rio de Janeiro: INCA, 2016^a

BRASIL. Instituto Nacional de Câncer José Alencar Gomes da Silva. **Eu cuido da minha saúde todos os dias**. E você? 2022. Acesso em: 14 de set. 2021.

BRASIL. MINISTÉRIO DA SAÚDE. Diretrizes Brasileiras para o Rastreamento do Câncer. Instituto Nacional de Câncer, 2016b. Disponível em: https://www.inca.gov.br/sites/ufu.sti.inca.local/files//media/document//diretrizesparaorastreamentodocancerdocolodoutero_2016_corrigido.pdf. Acesso em: 14 de set. 2021.

BRASIL. Organização Pan-Americana da Saúde – OPAS. **HPV e câncer do colo do útero**. 2021.

FERNANDES, C. E.; DE SÁ, Marcos Felipe Silva. **Febrasgo-Tratado de Obstetrícia**. 2019.

FIGUEIREDO, E. M. A.; MONTEIRO. **Tratado de Oncologia**. 1 ed. Rio de Janeiro: Revinter, 2015